



ON TARGET

A publication for the members of
Jackson Purchase Rifle & Pistol Club
www.jprpc.net

NRA # B0079 CMP#22024

Volume 29 Issue 11

December 2009

CLUB OFFICERS

- President:** Mike Jones 270-554-5833
- Vice Presidents**
1st VP Range Operations & Executive Officer:
 Mike Marshall 270-898-0065
 shooter25@mchsi.com
- 2nd VP Membership:**
 Glenn Newtown 270-575-3548
 glennannnewtown@yahoo.com
- 3rd VP Facilities:**
 Lee Miller 618-524-5342
- 4th VP Administrative:**
 Gary Lambert 270-441-7046
- 5th VP Juniors:**
 David Langston 270-554-9217
 djdlangston@aol.com
- Secretary:**
 Lisa Jones 270-443-3758
- Treasurer:**
 Phyllis McCutchen 270-443-3758
 padshoot@apex.net
- Newsletter Editor:**
 Lori Bryant opsprinting@bellsouth.net
- Discipline Chairpersons**
Bench Rest Rifle:
 Darell Holcombe 618-524-5325
 darell_holcombe@hotmail.com
- Big Bore Silhouette:**
 Bob Longworth
 bigbore@windstream.net
- Combat Pistol & Bowling Pin:**
 Mike Jones 270-554-5833
- Cowboy Action:**
 Larry Waggoner H 270-443-5216
 ljwagg@apex.net W 270-441-6918
- PPC:**
 Richard Roof
 rroof@paducah.com 270-554-4466
- Rifle Hi-Power:**
 George Reynolds 270-443-2864
- Silhouette:**
 Lee Jackson 270-492-8303
 leejackson@yahoo.com
- Vintage:**
 Ricky Emerson 270-462-3794
 bigfoot@brtc.net
- NRA Representative:** Todd Johnson
- Stat House** 270-442-3945

MUZZLELOADING RIFLE MATCHES CANCELLED

Till further notice, all Muzzle loading Rifle Matches are cancelled for the rest of the season. New Range Match schedules should be out by February.

Public Range

Don't forget about the public range. It is also an added benefit for members as well as the general public. If there is a match going on, you can come shoot on it at no charge. In addition, remember we also have available a trap range that members can shoot at a reduced fee. So dust off those shotguns, grab a friend and come out and see us on the weekends. We are here from 1 to 5 on Saturday and Sunday, weather permitting.



*Merry Christmas & Happy New Year
We would like to take this opportunity to thank
all the volunteers who sacrifice their time
throughout the year to keep the club going and
we want to wish everyone a
safe and happy holiday season.*

FROM THE PRESIDENT

As the 2009 shooting season winds down, I would like to take this opportunity to wish each and every one of you and your families a safe and happy holiday season. I look forward to seeing everyone at the Range next year.

Upcoming Range events include, Big Bore Silhouette on December 13th and January 10th and IDPA on December 13th and January 3rd. Come out and give them a try.

Range Orientation

All club members must undergo range orientation every three years. The times posted below should make it convenient for you to meet these requirements.

1st and 3rd Wed. at 10 a.m.

- Ricky Emerson 270-462-3794
 Mike Marshall 270-898-0065
 Lee Miller 618-524-5342

Evenings & Weekends

- George Reynolds 270-443-2864

Lee Miller (618) 524-5342 is available anytime by appointment, if you will call him and set it up.
 Bob Longworth (270) 395-0401 is available weekdays noon to 2 p.m. and weekends by appointment.

Jackson Purchase Rifle & Pistol Club
 Big Bore Silhouette
 October 11, 2009
 Bob Longsworth Match Director

We had a good turn out for our match, with some good scores turned in. We are going to include Cowboy Lever Action at our matches, so I would like to invite all you Cowboy Action Shooters to come and join in the fun. This event is going to be N.R.A. Sanctioned. We shoot the second Sunday of each month all year round. Come out and knock down some steel with us.

Thank You Much to those who help me each and every match. I couldn't do it without you.

Cowboy Lever
 Darell Holcombe-21
 Bill Parmely-21 Scoped

Big Bore Silhouette
 Steve Beck Montgomery R-AA S&W 357mag-29
 Steve Beck Montgomery P-AA T/C 6.5tcu-34+2
 John Howard P-AA T/C 7tcu-24
 John Howard UAS-AAA XP-100 7mm08-38
 Dennis Sanderson U-AA T/C 300-221-30
 Damien Austin U-AAA XP-100 7br-32
 Jerry Stringham US-AA XP-100 7br-32
 Bob Longsworth UAS-AAA T/C 6.5j dj-35
 Bob Longsworth P-AA MOA7 br-34
 Darell Holcombe UAS-AAA XP-100 35rem-37
 Dallas Westgaard U-AAA XP-100 7br-34
 Dallas Westgaard UAS-INT XP-100 6.5br-34
 Chuck Wright T/C-29
 Don Pitt scoped rifle-38

Bob Longsworth

26th North Carolina

The 26th North Carolina regiment was raised in western North Carolina, with Zebulon B. Vance serving as it's first commanding officer. He was elected governor of North Carolina in 1861 and command passed to Henry King Burgwyn Jr.

The 26th spent it's first year defending the coast, and saw it's first action at New Bern, North Carolina. They then went north and fought in the Seven Days Battles before returning to the coast. In 1863 it again marched north to be attached to Robert E. Lee's Army of Northern Virginia. They marched into Pennsylvania with Pettigrew's Brigade, and fought at McPherson's Ridge on the first day. The regiment suffered heavy casualties fighting the 24th Michigan, part of "The Iron Brigade." They were placed in reserve and rested the second day, and on the third day took part in Pickett's Charge, losing an additional 120 men.

The 26th lost more men than any other regiment, Union or Confederate at the Battle of Gettysburg. Of more than 800 men present for duty on July 1st, 1863, 734 fell or were captured, including Colonel Burgwyn, Lt. Colonel Lane, all 20 color bearers, 80 of 82 men in Company E, and all 93 men in Company F. This company included 3 sets of twins, 5 of whom were dead at the end of the battle.

Out of a regiment originally numbering 1200, 120 men and 10 officers received their parole when the Army of Northern Virginia surrendered at Appomatox.



Wishing Everyone Safe & Happy Holidays

**WEST KY IDPA MATCH
SUNDAY, November 1, 2009
IDPA CLASSIFICATION MATCH**

Each shooter is ranked according to their scores from the IDPA Classification Match. **HOWEVER, ONCE YOU ATTAIN A CERTAIN RANK, YOU CANNOT GO BACKWARDS!** The Classification Match is always the same, so everyone will have ample opportunity to improve on their rankings as time goes on.

Here's the breakdown for the rankings that IDPA uses. Should you EXCEED the score shown, it puts you

in the classification beneath the one you're looking at. "NOVICE" is below "MARKSMAN"

Class:	CDP	ESP	SSP	ESR	SSR
Rank:					
MASTER	91.76	89.41	98.82	100.82	102.35
EXPERT	111.43	108.57	120.00	122.00	124.29
SHARP-					
SHOOTER	141.82	138.18	152.73	154.73	158.18
MARKSMAN	195.00	190.00	210.00	212.00	217.50

NOVICE Anything above the numbers shown for Marksman
The figure in the () indicates your total "points down" for that stage. Then the total points down are multiplied by .5 and added to your overall time.

	Stage 1	Stage 2	Stage 3	Total*
<u>CDP</u> - No Shooters in this classification				
<u>ESP</u> - No Shooters in this classification				
<u>SSR</u> - No Shooters in this classification				
<u>SSP</u>				
John C Muir	44.12	37.84 (12)	77.85 (26)	159.81 (38) stays expert

Richard Roof	43.32 (2)	39.22 (11)	81.26 (45)	163.80 (58)MM
Jim Putrich	52.94 (4)	42.74 (5)	86.25 (29)	181.93 (38)MM
Donald Clapp	53.82 (2)	47.59 (18)	91.90 (44)	193.31 (64)MM
Terry Muir	79.78 (31)	65.82 (41)	137.00 (86)	282.60 (158)NV
Sam Key	90.38 (54)	81.92 (71)	114.15 (83)	286.45 (208)NV

CDP = Custom Defense Pistol (1911)

ESP = Enhanced Service Pistol

SSP = Stock Service Pistol

SSR = Stock Service Revolver

DNF = Did Not Finish

DNS = Did Not Score

MA = Master

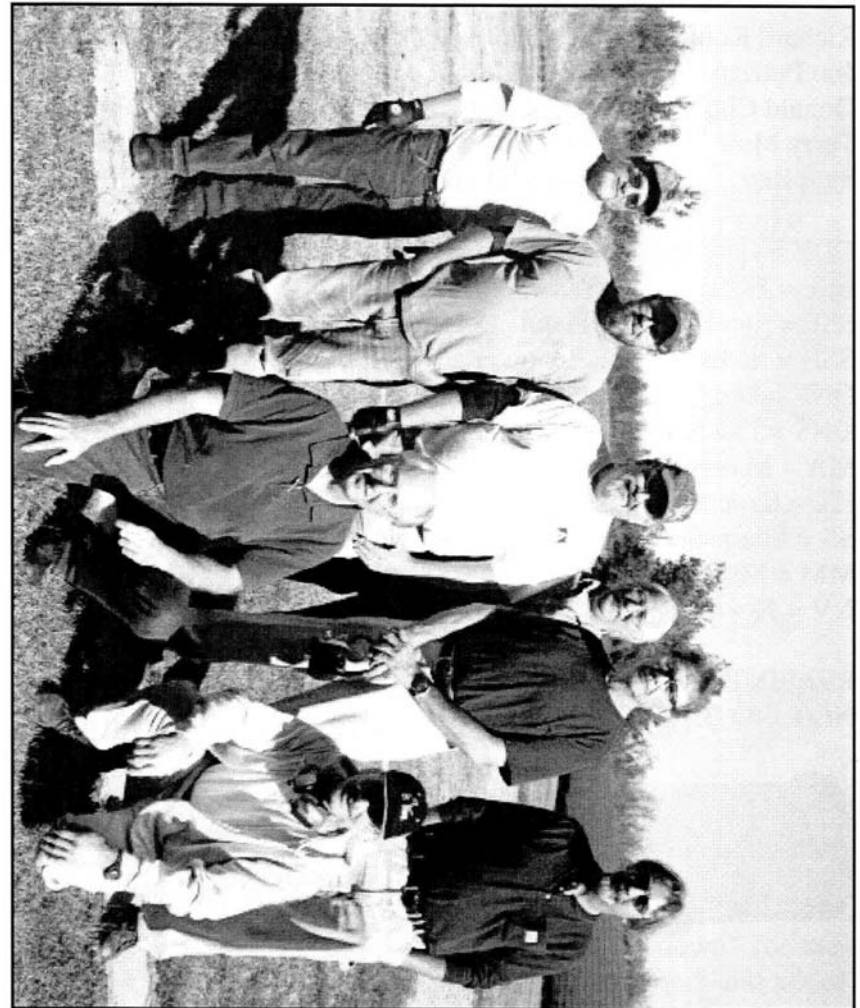
EX = Expert

SS = Sharpshooter

MM = Marksman

NV = Novice

REMEMBER, ONCE YOU ATTAIN A RANK, YOU CANNOT GO BACKWARDS.



Standing L-R:
 Chuck Wright,
 Dennis Sanderson,
 Darrell Holcomb,
 Bob Longsworth,
 Bill Parmley,
 & John Howard

Kneeling L-R:
 Jerry Stringham
 & Steve Beck-Montgomery

Holt Collier

Holt Collier was born about 1848 in Mississippi, a slave of Howell Hinds. Hinds County Mississippi is named after Howell's father Gen. Thomas Hinds. Holt demonstrated his marksmanship at an early age, killing his first black bear at the age of 10. At the outbreak of the Civil War, Holt's master and his son left for the War after giving him his freedom, and instructing him to remain on the plantation, as he was too young to fight. Holt disobeyed and stowed away on a riverboat, joining Howell and his son in Memphis, TN. At the age of 14, Holt joined the 9th Texas Brigade serving with Company I throughout the War. At the Battle of Shiloh, Holt witnessed the death of General Albert Sidney Johnston, commander of the Confederate Army. During the Reconstruction period, Holt was accused of the murder of Captain James King, but was acquitted by a military tribunal in Vicksburg, MS. Holt left the state on advice of William A. Percy of Greenville, going to Texas to work as a cowboy on the ranch of his former commander Sullivan Ross, future Governor of Texas. Upon the death of his former master, Holt returned to Mississippi and remained in Greenville the rest of his life. He became a noted bear hunter, killing over 3000 bears in his lifetime. He served as President Theodore Roosevelt's tracker for his famous Mississippi bear hunt of 1902. It was on that hunt when President Roosevelt refused to shoot a wounded bear that Holt rounded up for him, that the "Teddy Bear" craze began. Holt died August 1, 1936, living to the ripe old age of 88, and is buried in Live Oak Cemetery in Greenville, MS.

On February 28, 2004, a Confederate headstone provided by the Veterans Administration was placed on Holt's grave. With the National Flags of the Confederacy flying, the marker was dedicated by an Honor Guard from at least 8 re-enactment groups from 3 states. The National Flag of the Confederacy was presented to Mrs. Ann Marie Parker, Holt Collier's great niece. Holt Collier is recognized as Mississippi's only official soldier of African descent

Schuler-Reform-Pistol

Before the development of the semi-automatic self-loading pistol, many ingenious attempts were made to solve the problem of the physical bulk of revolvers. The weapon shown here was such an attempt. It is a Belgian copy of a design by August Schuler of Suhl, Germany.

The basic lock mechanism was that of a normal double-action revolver, where the hammer acted on a firing pin in the frame. The front end of the frame though, consisted of a pair of parallel side-plates, between which fitted a set of four vertically stacked barrels. The four barrels were formed onto a solid vertical breech block and were aligned to chambers in the block that would hold four cartridges. These chambers were first loaded and then the barrel/block assembly was pressed down like a clip between the plates, where it was held in place by a small spring-loaded stud. The top round was fired first. Then pressure on the trigger raised the block of barrels so that the second cartridge was in line with the firing pin, ready for the next shot. After each shot, the trigger would raise the barrel/block so that the next cartridge would line up with the firing pin.

The three lower barrels had small holes drilled on their upper sides to connect each to the barrel immediately above; so, when the second and subsequent barrels were fired, enough gas passed upwards to blow out the empty case in the barrel above. The comb of the hammer was shaped in such a way as to deflect these ejected cases away from the direction of the firer's face. The final spent cartridge had to be manually removed.



RANGE SCHEDULE

Special Note on Range Schedule: Dates and events published below should be considered accurate unless otherwise informed. Thanks.

Range Session			
12/05	Open to public-charge	11:00-12:30	Range 1
Defensive Pistol			
12/06	Semi-Auto, Revolver	09:00-17:00	Range 2
Christmas Dinner/Meeting Potluck			
12/06	Bring a dish, meat and drinks provided	02:00-??	Archery Range at Shooters Supply
Metallic Silhouette			
12/13	Big Bore Center Fire Pistol	10:00-till dark	Range 3
Defensive Pistol			
12/13	Semi-Auto, Revolver	12:00-16:00	Range 2
Defensive Pistol			
1/13	Semi-Auto, Revolver	13:00-17:00	Range 2
Metallic Silhouette			
01/10	Big Bore center fire pistol	10:00-till dark	Range 3
CCDW Range Session			
0-1/23	Open to public-charge	12:00-12:30	Range 1

Please Remember: Indicated ranges are not available for personal use during scheduled times noted above. When not scheduled, Ranges 1 & 3 are available 7 days a week from 8:00AM to Sunset, but not before or after these times!